

2113. Phone +61 2 887621



Group GSA Pty Ltd ABN 7
Level 7, 80 William St East
Australia 2011
www.groupgsa.com

T +612 9361 4144 F +612

architecture interior design
nom architect M. Sheldon 3
Project Title

'RESIDENTIAL AC
CATHOLIC HEAL

11,13,15 Lang Road,76,78
Hume Hwy, Casula NSW 2

Drawing Title

GROUND
RL 38.5

Scale

Drawing Created (date)

Drawing Created (by)

Plotted and checked by

Verified

Approved

Project No

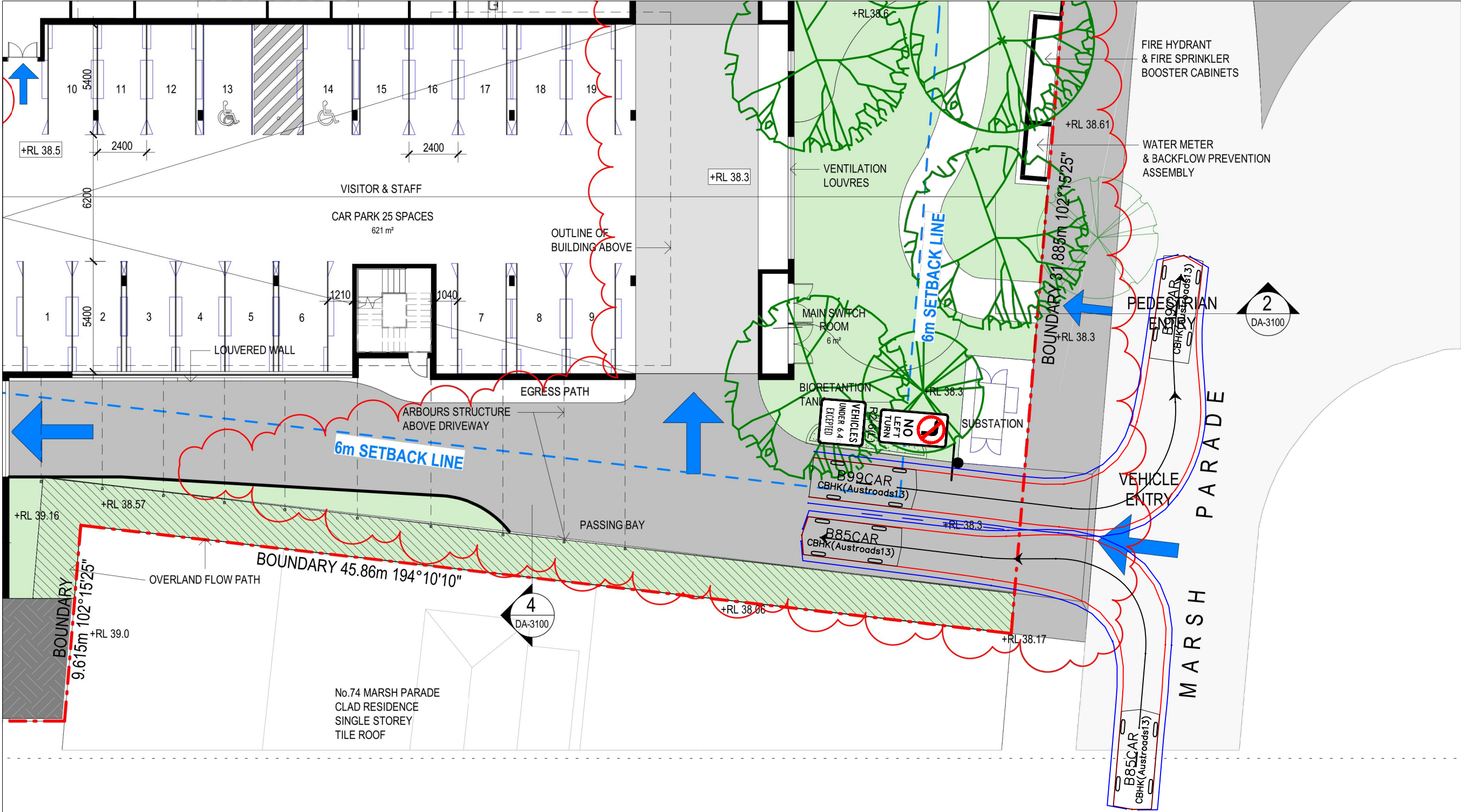
160474

This drawing is the copyright
not be altered, reproduced
any means in part or in whole
of Group GSA Pty Ltd. All
checked and verified on site
any work, making of shop
components.
Do not scale drawings. Use

NOTE:
SKETCH PLAN ONLY. PROPERTY BOUNDARIES,
UTILITIES, KERBLINES & DIMENSIONS ARE SUBJECT TO
SURVEY AND FINAL DESIGN. TRAFFIC MEASURES
PROPOSED IN THIS PLAN ARE CONCEPT ONLY AND
ARE SUBJECT TO FINAL DESIGN BY CIVIL ENGINEERS.

— Swept Path of Vehicle Body
— Swept Path of Clearance to Vehicle Body

8.8m MEDIUM RIGID VEHICLE
SWEPT PATH



2113. Phone +61 2 887621



Group GSA Pty Ltd ABN 7
Level 7, 80 William St East
Australia 2011
www.groupgsa.com

T +612 9361 4144 F +612

architecture interior design
nom architect M. Sheldon 3
Project Title

'RESIDENTIAL AC
CATHOLIC HEAL

11,13,15 Lang Road,76,78
Hume Hwy, Casula NSW 2

Drawing Title

**GROUND I
RL 38.5**

Scale

Drawing Created (date)

Drawing Created (by)

Plotted and checked by

Verified

Approved

Project No Dr

160474 D

This drawing is the copyright
not be altered, reproduced
any means in part or in whole
of Group GSA Pty Ltd. All
checked and verified on site
any work, making of shop d
components.
Do not scale drawings. Use

NOTE:
SKETCH PLAN ONLY. PROPERTY BOUNDARIES,
UTILITIES, KERBLINES & DIMENSIONS ARE SUBJECT TO
SURVEY AND FINAL DESIGN. TRAFFIC MEASURES
PROPOSED IN THIS PLAN ARE CONCEPT ONLY AND
ARE SUBJECT TO FINAL DESIGN BY CIVIL ENGINEERS.

— Swept Path of Vehicle Body
— Swept Path of Clearance to Vehicle Body

**B85 & B99 VEHICLE SWEPT
PATHS**